

THE
**BERKELEY
SQUARE**
ESTATE

FLAT 4, CARPENTERS HOUSE, 26 HAYS MEWS
MAYFAIR LONDON W1
LET



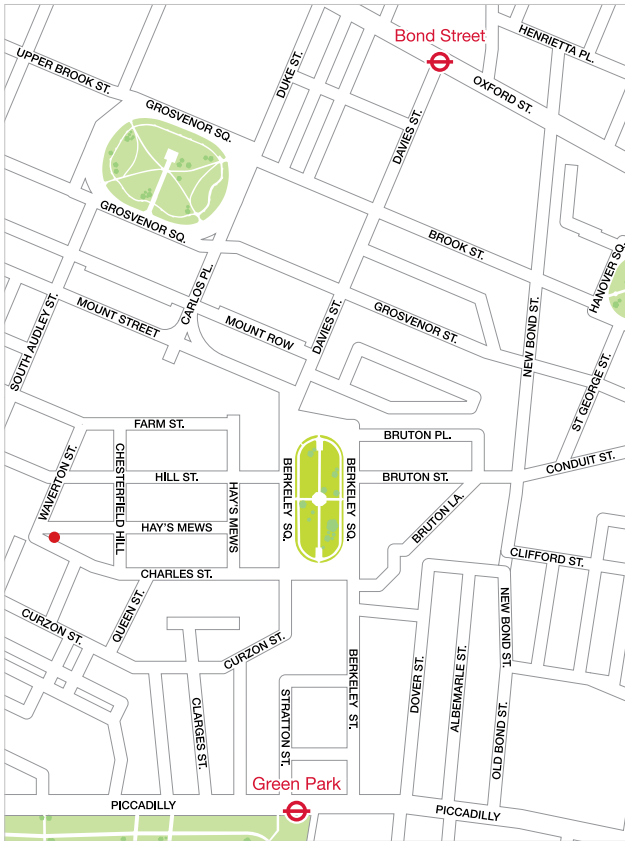
A truly unique one bedroom apartment (719 sq ft) situated on the third floor of this recent period development which is tastefully furnished in an exciting modern style. The property benefits from plentiful amounts of natural light, period features and open views over Waverton Street.



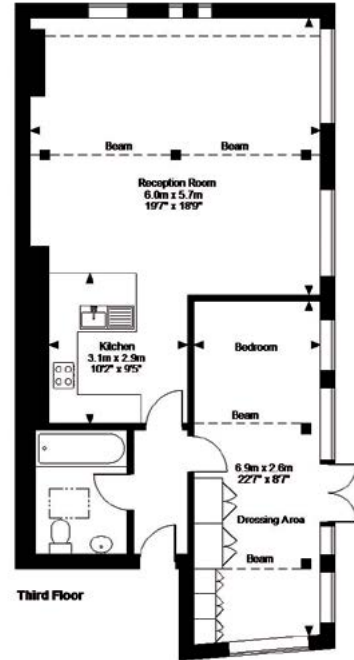
FLAT 4, CARPENTERS HOUSE, 26 HAYS MEWS MAYFAIR LONDON W1 LET

LOCATION

This unusual period building is conveniently located in the heart of Mayfair at the western end of Charles Street, in close proximity to the world renowned restaurants, boutiques and galleries of Mount Street and Bond Street as well as the open spaces of Hyde Park and Green Park. Both Bond Street and Green Park tube stations are within five minutes walk.



FLOOR PLAN



Floor plan not to scale. For indicative purposes only

RENT

£750 per week.

Alastair Mercer

enquiries@mercerpasqua.co.uk

020 7665 6633



INDEPENDENT PROPERTY CONSULTANTS

We wish to advise prospective purchasers that these sale particulars are believed to be correct, but their accuracy is in no way guaranteed, nor do they form part of any contract. We have not carried out a detailed survey nor tested the services, appliances or specific fittings.

January 2015

taylorreid design +44 (0) 20 7355 2500